



**Anchor
Hatches**

Rugged, Innovative & Safe Hatches
Built to Work in All Conditions





Our Quality Sells Itself

We take pride in our record of 25 years of innovation that has made us a leader in our industry. As the original maker of multi-dog hatches, our design has been copied, but never equaled. Our maintenance free products and outstanding customer service contribute to the quality our customers appreciate.



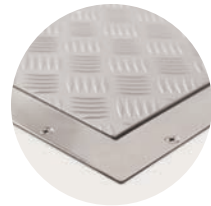
Anodized Hatches

Anchor Hatches understands that the hatches on your boat need to work well, look good, stand up to all kinds of weather, and last for many years.

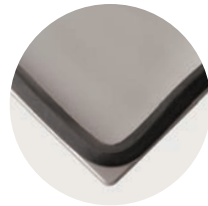
We build ours out of 1/4 inch marine grade 5086 anodized aluminum cover and 1/8 inch stainless steel frame. Our innovative design completely prevents premature corrosion by ensuring the metals do not come in contact with each other, doubling or tripling the life of your hatch.

We complete the product with 5 bar aluminum for more grip. The flexible neoprene gasket material is installed to the cover using our special vulcanized glue. For safety and convenience, we offer a low profile, flush mounted design.

Available in eight standard sizes or custom designed on request. T-wrench available.



Flush-mounted design



Replaceable triangular neoprene gasket



T-wrenches



Available in quick release



Quick Release Hatches

Built with the same marine grade anodized aluminum as our dogging style hatch, our quick release hatches offer a 1/4 turn single action mechanism for easy access.

They offer brass corrosive resistant dogs that are adjustable, allowing you to exert more pressure if needed, as well as adjustable seal pressure.

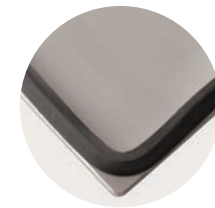
The moving parts are engineered to not require yearly maintenance.



Single-turn mechanism



Brass corrosive resistant dog



Replaceable triangular neoprene gasket



Standard gutter drain system

Round Anodized Hatches

Our round hatches have a clear opening of 9 inches, a deck cut-out of 10 1/2 inches and an over deck flange of 12 inches.

They come with an anodized aluminum cover and frame, and are built to last because of the unique anodizing process.

We cut and form the hatch before this pro-grade protection is applied to ensure that the critical bolt holes and edges get anodized.



- Flush-mounted design
- Anti-corrosion dogging mechanism
- Safety rope attachment

Round quick release anodized hatches also available.

No wrench is needed to operate.





Custom Hatches

Split cover engine hatches are ideal for easy lifting by one person.

We also offer single covers and a raised hatch to accommodate high engines.

These hatches have a strong back brace for extra strength and a gutter around them to expedite water evacuation.

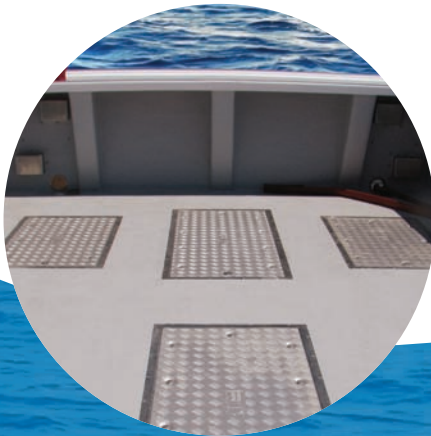
Also available:

- Hatch hinges
- Solid lift handles
- Gas springs
- Gutter systems
- Raised hatches
- Split hatches

These products are made with the same quality materials as all other Anchor Hatches products.

Like all our products, hatches can be custom designed to your unique specifications as well.

Standard Hatches in Stock



Five Reasons to Use Anchor Hatches

1. Our anodized products last longer.

The aluminum alloy we use for our hatches is the best on the market when it comes to combining ruggedness with being able to stand up to salt water corrosion.

We anodize our hatches. In the anodizing process we subject the hatches to involve the formation of a permanent protective film on the aluminum surface by means of an electro-chemical process.

This gives it a durable non-toxic and easy to maintain surface. When complete, this process seals the open pores of the aluminum to protect against weathering, fading and a stronger protection to salt water corrosion.

2. Unique design offers maximum protection.

To the best of our knowledge, we may be the only hatch supplier who takes the extra step of anodizing our products after they have been cut. If you anodize sheets of aluminum and then cut them, the protection is not the same. It leaves the edges unprotected. Our innovative design process provides top protection to last in all weather conditions.

3. We test every product for quality control.

All our hatches are tested to not leak in our facility prior to packaging and shipping. We offer installation instructions on our website: www.anchorhatches.com

4. Our gaskets are designed for maximum effectiveness.

Our self-adhesive gasket is a triangular neoprene one that compresses the right amount when dogged to keep your hatch secure and keep the water out.

5. We have the flexibility to do custom work.

We welcome new challenges. Consult us at 1 800.577.4356 or info@anchorhatches.com to solve your unique marine product needs.



Anchor Hatches

c/o P&E Manufacturing
1524 Route 950
Cap-Pelé, NB, Canada
E4N 1A9

info@anchorhatches.com
1 800.577.4356
Ext: 102 for Sales
anchorhatches.com

Contact Us

Anchor Hatches is a subsidiary of P&E Manufacturing. Our New Brunswick, Canada and Calais, Maine warehouses carry lots of inventory, allowing for fast and efficient delivery to local and international clients.