




---

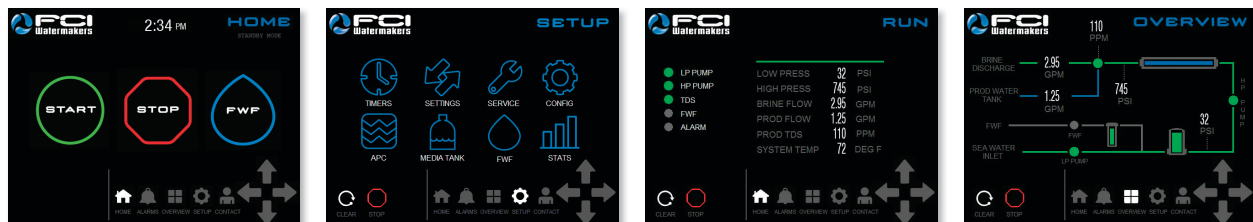
**QUALITY AND  
RELIABILITY YOU CAN TOUCH.**

---

Since its launch, the Neptune Horizontal Series has been recognized for its high efficiency and extreme reliability. With the latest FCI V4 controller technology, the **Neptune+** system integrates a marine-grade, high resolution 7-inch touch screen panel. Add an Automated Pressure Control, and the **Neptune+APC** puts complete watermaking automation at your fingertips. Capacities range from 1200 to 9500 GPD, making the Neptune Horizontal ideal for commercial vessels, island homes, oil platforms, hotels, or large yachts.

**RELIABILITY AND COMPLETE AUTOMATION AT YOUR FINGERTIPS.** FCI's next generation controller and interface allows customization of your watermaker through intuitive advanced touch screen controls. Our monitors' higher heat tolerance and system design allows it to work in the harshest environments. FCI touch screen controllers can be installed with confidence, because they are Bridge Classified for marine use with Type Approval Certifications from: ABS, GL, Lloyd's Register EMEA, Det Norske Veritas, and Russian Maritime Register of Shipping. Rest assured, our displays will not interfere with other on-board electronics.

FCI has been manufacturing watermakers and water purification equipment for over two decades. We design, manufacture and program our controllers in-house for optimum quality control, and to ensure we exceed your expectations. Know that a company specializing in only watermakers is here for you.





#### FEATURES:

- Advanced marine grade 7" high resolution touch screen controller
- Monitors are Type Approval Certified for marine use by: ABS, GL, Lloyd's Register EMEA, Det Norske Veritas, and Russian Maritime Register of Shipping.
- New NMEA 2000 compatible
- Unique IP address for remote access
- Built-in, on-screen troubleshooting
- 316SS Low-pressure Pump with closed impeller design (producing 50% more pressure with the same horsepower)
- 316SS HP Pump
- Commercially designed to operate 24/7, 365 days per year
- Pressure Vessels with 316SS pressure and product ports, stress-eliminating engineering
- 80 sq. ft. of Commercial Pre-filtration
- Conservatively rated to ensure performance under varying conditions
- Wash-down duty motors (epoxy coated, neoprene gaskets)
- Dual isolation mounts: 6 each on the pump and motor skid, and 6 on the main frame
- One Year Warranty

#### OPTIONAL EQUIPMENT / ACCESSORIES:

- Bridge classified 4.3" or 7" remote touch control station
- pH neutralizer filter
- Spare parts kits
- Cruising kits
- UV sterilizers
- Feed water pressure regulators, relief valves and feed pump
- Automated and manual Media Filters
- Custom system designs
- System soft start



Adds a fully Automated Pressure Control feature with manual override.

| MODEL                  | GPD/LPD      | GPH/LPH    | M3 | WEIGHT LBS/KG |
|------------------------|--------------|------------|----|---------------|
| NH12263+ / NH12263+APC | 1275 / 4827  | 53 / 201   | 5  | 398 / 180     |
| NH18263+ / NH18263+APC | 1850 / 7003  | 77 / 292   | 7  | 410 / 186     |
| NH25263+ / NH25263+APC | 2500 / 9464  | 104 / 394  | 9  | 416 / 187     |
| NH31263+ / NH31263+APC | 3100 / 11735 | 129 / 489  | 12 | 421 / 191     |
| NH43263+ / NH43263+APC | 4300 / 16277 | 179 / 678  | 16 | 471 / 214     |
| NH55263+ / NH55263+APC | 5500 / 20820 | 229 / 867  | 21 | 521 / 236     |
| NH75263+ / NH75263+APC | 7500 / 28391 | 313 / 1183 | 28 | 655 / 297     |
| NH95263+ / NH95263+APC | 9500 / 35961 | 396 / 1498 | 36 | 724 / 328     |

NOTE: Ratings based on 77°F/25°C; 32,500 TDS Feed; at 800psi, 120/220 vac, 60 Hz.

| MODEL                  | HP  | KW   | VAC         | PHASE | HZ    |
|------------------------|-----|------|-------------|-------|-------|
| NH12263+ / NH12263+APC | 3   | 2.98 | 220/380/460 | 3     | 50/60 |
| NH18263+ / NH18263+APC | 3   | 2.98 | 220/380/460 | 3     | 50/60 |
| NH25263+ / NH25263+APC | 5   | 4.47 | 220/380/460 | 3     | 50/60 |
| NH31263+ / NH31263+APC | 7.5 | 6.34 | 220/380/460 | 3     | 50/60 |
| NH43263+ / NH43263+APC | 7.5 | 6.34 | 220/380/460 | 3     | 50/60 |
| NH55263+ / NH55263+APC | 7.5 | 6.34 | 220/380/460 | 3     | 50/60 |
| NH75263+ / NH75263+APC | 10  | 8.2  | 220/380/460 | 3     | 50/60 |
| NH95263+ / NH95263+APC | 10  | 8.2  | 220/380/460 | 3     | 50/60 |

Contact factory for other voltages.

