

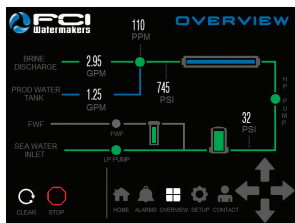
Shown 5500 GPD

KEY FEATURES:

- 7" High Resolution HMI Touch Screen that is Marine Grade and Bridge Certified
- Washdown Duty TEFC Motors
- APC Fully Automated Operation and Pressure Control
- 80 sq. ft. pleated Pre-filter cartridge
- Fully Automated Fresh Water Flush System

MODULARITY, QUALITY AND RELIABILITY YOU CAN TOUCH.

Since its inception, the FCI Neptune+ Series has been recognized for its high efficiency and extreme reliability. With output capacities ranging from 1,275 to 9,500 GPD, it has established itself as a dependable workhorse by utilizing premium components: 316SS pumps, commercial filtration, NEMA 4X electrical enclosures, slow turning HP pumps, pressure vessels with 6x the safety factor, and industry-leading certified control systems. When you add Automated Pressure Control, and the corresponding media filtration skid, the Neptune+APC is the optimum system with automated watermaking at your fingertips. The Neptune+ Modular system allows flexible installation options, which make it ideal for commercial vessels, island homes, oil platforms, hotels, or large yachts with limited operating space.



Simple one-touch operation, and quick view monitoring.

RELIABILITY AND COMPLETE AUTOMATION AT YOUR FINGERTIPS. FCI's next generation V4 controller and interface allows customization of your watermaker through intuitive advanced touch screen controls. Our monitors' higher heat tolerance and system design allow them to work in the harshest environments. FCI touch screen controllers can be installed with confidence, because they are Bridge Classified for marine use with Type Approval Certifications from: ABS, GL, Lloyd's Register EMEA, Det Norske Veritas, and Russian Maritime Register of Shipping. Rest assured, our V4 control will reliably perform for your application, and is rugged enough to last in your environment.

FCI has been manufacturing Watermakers and water purification equipment for over three decades. To ensure we exceed your expectations, we design, manufacture, program and test our units in-house for optimum quality control. Know that a company specializing in only Watermakers is here for you.

NEPTUNE+ MODULAR SYSTEM FEATURES:

- **PRE-FILTER:** 80 sq. ft. of pleated filter with PVC core in addition to pressure monitoring and alarming.
- **MEMBRANES:** High Rejection non-proprietary membranes used to obtain the highest quality of product water.
- **PRODUCT VESSELS:** 316SS product/pressure ports, and FDA/NSF-51 fittings used on the product water.
- **LP/FEED PUMP:** Closed impeller design offers 50% more pressure efficiency over standard pumps.
- **PRESSURE GAUGES & FLOW METERS:** Provide visual indication of critical info to aid troubleshooting.
- **MOTORS:** TEFC continuous-duty wash down rated motors with 316SS shaft, and sealed, maintenance-free bearings for long life application.
- **HMI TOUCH SCREEN:** 7" High-resolution, Marine Grade and Bridge Certified.
- **HIGH PRESSURE PUMP:** Continuous-duty 316SS HP pump with Pulsation Dampener.
- **FRAME:** Aluminum powder coated frame.
- **SHOCK MOUNTS:** Reduce noise and vibration.
- **AUTOMATIC PRESSURE CONTROL (APC):** Auto-adjusts system pressure to feed water conditions.
- **ELECTRICAL:** NEMA 4X rated enclosure with overload protection on low pressure and high pressure pump.
- **FRESH WATER FLUSH:** Schedule automated flushes through the V4 Control System.

DESIGN PARAMETERS

Design Permeate Salinity:	< 500ppm
Salt Rejection (Chloride):	99.7%
Control System:	V4
Control Voltage:	24 vdc
Operation Pressure:	825 PSI/56 Kg/cm ²

POWER SUPPLY OPTIONS

VAC/Phase/Hz	208-230/3/60	380-415/3/50	440-480/3/60
1275-1850	11.5 A	7.4 A	6.0 A
2500	16.5 A	10.0 A	8.5 A
3100-5500	22.0 A	13.0 A	11.0 A
7500-9500	27.0 A	16.0 A	14.0 A

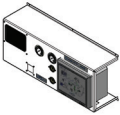


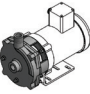
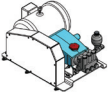
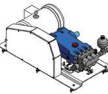



UTILITIES

Inlet:	1" FNPT
Brine:	1" FNPT
Product:	½" FNPT
FWF:	½" FNPT

MODEL	GPD/LPD	GPH/LPH	M3	HP	FEED GPM	KW	WEIGHT LBS/KG
NM12263+ APC	1275 / 4826	53 / 201	4.83	3.0	5	2.98	300 / 136
NM18263+ APC	1850 / 7003	77 / 291	7.00	3.0	5	2.98	315 / 143
NM25263+ APC	2500 / 9463	104 / 394	9.47	5.0	8	4.58	340 / 154
NM31263+ APC	3100 / 11734	129 / 488	11.74	7.5	12	6.48	370 / 168
NM43263+ APC	4300 / 16277	179 / 678	16.29	7.5	12	6.48	390 / 177
NM55263+ APC	5500 / 20819	229 / 867	20.83	7.5	12	6.48	410 / 186
NM75263+ APC	7500 / 28390	312 / 1182	28.41	10	16	8.39	435 / 197
NM95263+ APC	9500 / 35931	395 / 1497	35.98	10	16	8.39	470 / 213

NOTE: Ratings based on 77°F/25°C; 35,000 TDS; <3 SDI; 7.5 pH; Free Chlorine max 0.1 mg/L.

MODULAR DIMENSIONS

								
CONTROL PANEL	FRESH WATER FLUSH	PRE-FILTER	LP PUMP	HP PUMP 1275-5500 GPD	HP PUMP 7500-9500 GPD	2500 PV Assembly	5500 PV Assembly	9500 PV Assembly
W 35.50 in. D 11.20 in. H 16.70 in.	W 12.66 D 8.09 H 13.49	W 17.00 D 15.10 H 19.50	W 6.80 D 13.50 H 9.30	W 18.80 D 9.80 H 10.50	W 31.58 D 18.25 H 16.01	W 49.49 D 4.00 H 27.49	W 54.49 D 6.00 H 30.99	W 94.80 D 6.00 H 31.00