

# ***Shore Power System***

***Constant Clean Safe Power***



## ***Hubbell Marine Isolation Transformers***

***15 kVA and 25 kVA Models***

**Protects Sensitive Equipment on Board**

**Virtually Eliminates Potential for In-Water Stray Current**

Can be wired per ABYC E-11 for either a Polarization or Isolation Transformer system.



**Marine Electrical Products**

# Hubbell Marine Isolation Transformers

Hubbell Isolation Transformers can protect your vessel's sensitive electronic equipment from damaging electrical spikes or surges.

Hubbell Isolation Transformers will also convert various dockside power systems to the 120/240 volt power required to operate all of the equipment on board.

And most importantly, Hubbell Isolation Transformers greatly reduce the possibility of stray current leaking from your boat's electrical system into the water, which could otherwise result in Electrical Shock Drowning (ESD) or electrocution.

## Available Options:

15 kVA and 25 kVA Models

60 Hz and 50/60 Hz Models

White Powder Coated Steel Housing (Non-Boost Only)

#316 Stainless Steel Housing (with and without Auto-Boost)

## International 50/60 Hz Versions

Pre-wired for 120/240 Volt Applications

230 Volt Tap Provided for International Travel

## Features

Compact Size and Weight

12.5% Taps

Two Full Current-Carrying Shields

Vibration Resistant

Exceeds ABYC's 4000 Volt HIPOT Test

Full Capacity Taps = 1:1 Voltage Ratio

Easy Access Wiring Chamber

Virtually Eliminates Potential for In-Water Stray Current

Isolated and Non-Isolated Ground Stud Provided to Accommodate Isolation or Polarization Transformer System



**Standard White Powder Coated Steel Housing**

## Constant Clean Safe Power

By the Shore Power Experts



# Hubbell Marine Isolation Transformers

## Also Available with Auto-Boost

**1** Remote Control Unit provided with 32 feet cord, allows you to select "Auto" for Dynamic Mode or "Man." for Manual or Static Mode (*Units are Factory Programmed in Auto Mode*)  
Auto-Boost of 12.5% will engage if voltage reading at the dock falls between 195 – 220 Volts

**2** AC Voltage monitored and displayed on Remote Control  
Manual Mode allows monitoring voltage and can be manually adjusted "Auto" mode automatically boosts voltage by 12.5% if low voltage is detected  
Wi-Fi enabled to monitor on your mobile device or computer

**3** Main Module Cleanly Mounted in Easy Access Wiring Chamber

**4** High-Quality Terminal Block for Wire Management

**5** Sand-Filled and Epoxy Topped

**6** Auto-Boost/Remote Cable Receptacle

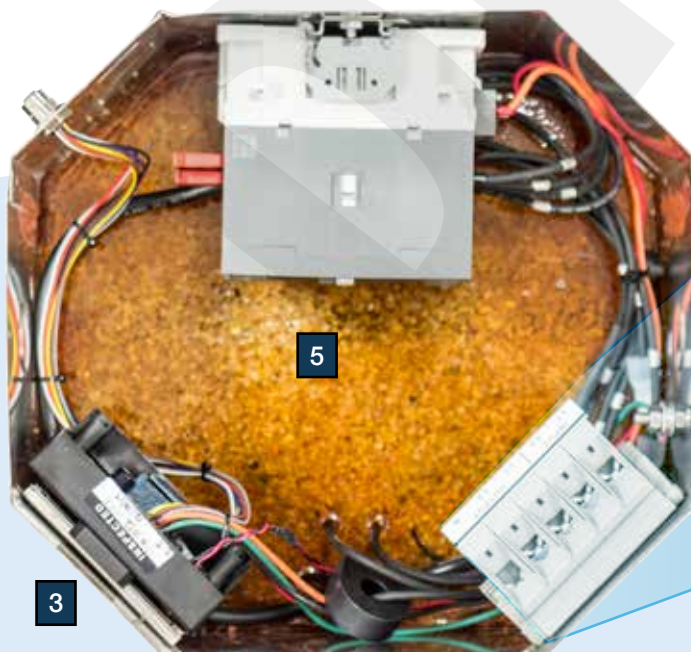


**#316 Stainless Steel Housing with Auto-Boost**

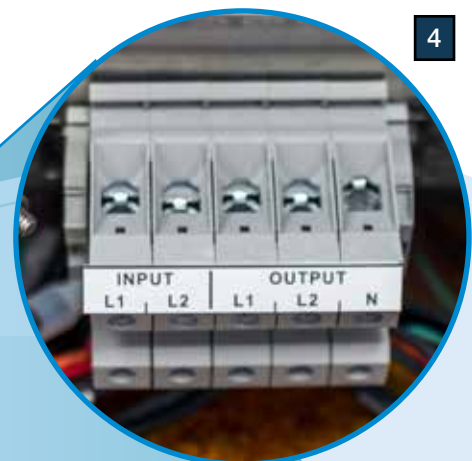


**Auto-Boost Remote Control**

**Neatly Routed Wiring Chamber**  
(Top view with cover removed)



**Terminal Block**



# Hubbell Marine Isolation Transformers

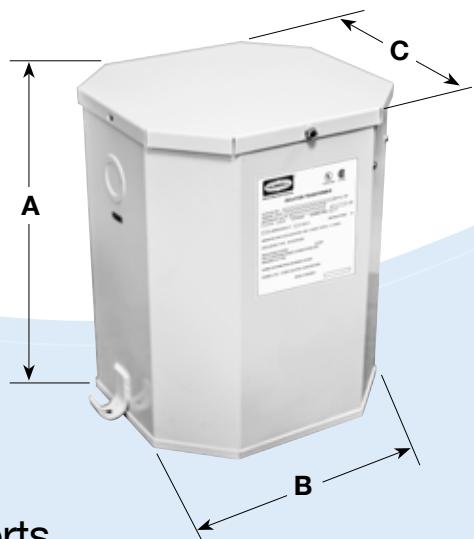


## Isolation Transformers

Description	Weight (Lbs.)	Color	60 Hz	50/60 Hz
			Catalog Number	Catalog Number
15 kVA Isolation Transformer	170	White Powder Coated Steel	<b>HBL50AITW</b>	<b>HBL32AITW</b>
15 kVA Isolation Transformer	170	#316 Stainless Steel	<b>HBL50AITSS</b>	<b>HBL32AITSS</b>
15 kVA Isolation Transformer with Auto-Boost	175	#316 Stainless Steel	<b>HBL50AITSSB</b>	<b>HBL32AITSSB</b>
25 kVA Isolation Transformer	250	White Powder Coated Steel	<b>HBL100AITW</b>	<b>HBL63AITW</b>
25 kVA Isolation Transformer	250	#316 Stainless Steel	<b>HBL100AITSS</b>	<b>HBL63AITSS</b>
25 kVA Isolation Transformer with Auto-Boost	255	#316 Stainless Steel	<b>HBL100AITSSB</b>	<b>HBL63AITSSB</b>

## Dimensions Inch (mm)

Description	Weight (Lbs.)	A - Height	B - Width	C - Depth
15 kVA Models	170	16.94" (43.0)	14.12" (35.9)	11.59" (29.4)
25 kVA Models	250	18.44" (46.8)	16.13" (41.0)	13.34" (33.9)



## Constant Clean Safe Power

By the Shore Power Experts



# Hubbell Marine Isolation Transformers

## Features

- Full Capacity Taps = 1:1 Voltage Ratio
- 1 Easy Access Wiring Chamber/Drip Lid
- 2 Auto Boost Connector
- 3 1" and 1½" Knockouts
- 4 Weep Holes
- 5 Mounting Brackets



## Recommended Seal-tite Cord Connectors

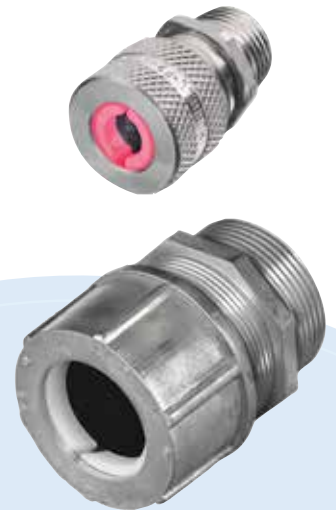
For input and output cables.

Straight connectors for 1 and 1½ inch KOs.

## Cord Connectors

Description	NPT Hub Size	Cord Diameter Inches (mm)	Form Size	Cast Aluminum Catalog Number
Straight male connectors	1	1.13"-1.25" (28.6-31.7)	F5	<b>SHC1048*</b>
	1½	1.25"-1.38" (31.7-34.9)	F5	<b>SHC1059</b>
	1½	1.38"-1.50" (34.9-38.1)	F6	<b>SHC1061</b>

Note: \*Cable jacket may have to be stripped to pass through connector body.



## Constant Clean Safe Power

By the Shore Power Experts

# Hubbell Marine Shore Power Products

## 50 Amp Cable Sets

- Available with and without LEDs
- Two bright and durable LEDs. GREEN indicates "Power-ON" and RED indicates "Incorrect Wiring" at the power source
- Totally molded design for superior waterproofing and durability
- Exclusive copper crimp barrel terminations for tighter connections and longer life
- Marine UL and cUL Listed



### Plug/Connector Design

- New improved ergonomic styling
- Line-up notches to indicate: Locked - Unlocked
- Stainless steel threaded sealing ring to provide a watertight seal when mated with the shore power inlet
- High-heat resistant thermoset interior



### Inlet Design

- Base and cover are #316 stainless steel for strength and corrosion resistance
- Metal threads for making a watertight seal
- Contact blades are nickel plated brass for corrosion resistance
- Mirror finish

*Note: Cable sets must be fully extended before using.*



HBL61CM52

HBL61CM52LED



### Termination Design

- Superior terminations extend life of your cables sets
- Bull ring for strain relief on the terminals
- Exclusive copper crimp barrel termination provides protection against internal overheating and burnout compared to brass crimps

## 100 Amp Cable Sets

- Only Hubbell offers 3, 4 and 5 wire 100 amp cable sets for your shore power requirements
- Cable sets manufactured in factory-controlled conditions
- Specially compounded STOW 105°C cable is UL Listed to accommodate a full 100 amperes



### Plug/Connector Design

- Supertough nylon housing provides increased safety and abuse resistance
- Nickel-plated pins and sleeves for superior corrosion resistance
- Massive external cable grips protect the wiring from conductor movement which can cause strain on the terminals



### Inlet Design

- Nylon housing provides increased safety and resistance
- The gasketed, self-closing cover is keyed to normally seat in a position that provides a weatherproof seal; simply rotating the cover and locking it makes it watertight
- The device is marked with its catalog number and rating for easy identification

*Note: Cable sets must be fully extended before using.*



CS75IT4



# 200A and International Ship-to-Shore Devices

## 200 Amp Pin and Sleeve Devices

Hubbell was the first to offer a UL Listed 100 amp Marine Ship-To-Shore System... and now, we are the first to offer a UL Listed 200 amp Marine Ship-To-Shore System.

The only 200 amp rated Ship-to-Shore System - built specifically for Mega-Yachts.

Listed to UL1682 and UL Classified for the mating and operation of 200 amp devices. Mates with Cooper® Crouse-Hinds® Arktite® or Appleton® Powertite® (when installed in accordance with instructions furnished with device).



### Plug/Connector Design

- Pins and sleeves are made of nickel-plated Tellurium copper for superior corrosion and heat resistance
- UL Listed and CSA Certified



### Inlet Design

- Housing is made of copper-free aluminum with an electrostatically applied epoxy/polyester finish
- Type 3, 4, 4X Rated per UL50 standard for superior water resistance

*Appleton® and Powertite® are registered trademarks of Appleton Electric Company.  
Cooper Crouse-Hinds® and Arktite® are registered trademarks of Cooper Industries, Inc.*



## Internationally Rated Devices

- Only Hubbell Marine offers a complete line of Internationally Rated, uniquely-configured Shore Power Systems
- 16, 32 and 63 amp 230 volt, CE Certified shore power systems are available in traditional type #316 Stainless Steel and attractive Non-metallic White styles



### Connector Design

- #316 Stainless Steel housings similar to below – Plus – high-heat resistant thermoset interior, superior box-lug terminations to withstand the harsh marine environment
- Nickel-plated brass housing with high-heat resistant thermoset interior, superior box-lug terminations and robust cord clamp



### Inlet Design

- Non-metallic White style is UV resistant, weather tight and easy to wire terminations
- #316 Stainless Steel housings are waterproof, easy to wire and has a high-quality mirror finish and longer lasting metal threads



**HBL316CS25**  
**HBL316CS**  
**HBL332CS**

# Shore Power System

## Constant Clean Safe Power



### Available Literature

Hubbell offers an extensive literature library for product support. Downloadable PDFs are available on line.



Marine Catalog



Marine 100 Amp Ship to Shore Cable Sets



EXTRA DUTY®  
While-In-Use Covers



USB Charging Receptacles  
Type-C • Type A&C • Type A

**HUBBELL®**  
Wiring Device-Kellems

[www.hubbell-marine.com](http://www.hubbell-marine.com)



Hubbell Wiring Systems • Hubbell Incorporated (Delaware) • 40 Waterview Drive • Shelton, CT 06484 • Phone (800) 288-6000 • FAX (800) 255-1031  
Printed in U.S.A. Specifications subject to change without notice.

WLBM001 5/18