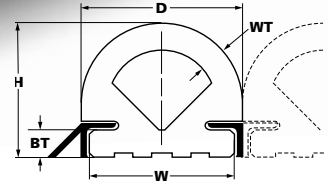
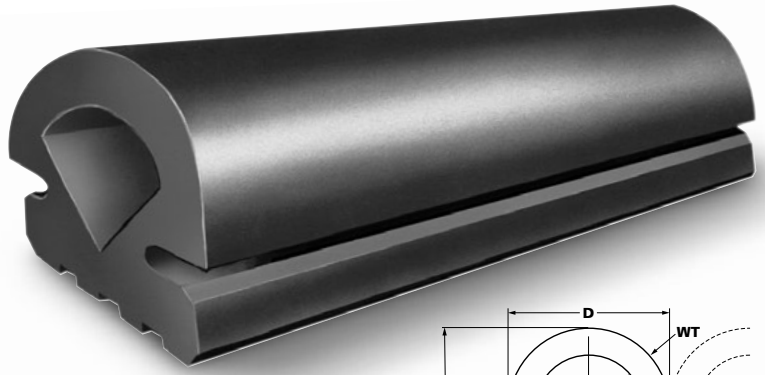


500 SERIES

FAN NOSE

For a professional looking D-shaped installation try our fan nose bumper. Held on the vessel, truck or dock in an angle iron channel, no mounting holes are necessary.

Offered in three EPDM colors: black, non-marking grey and white.



CODE NO.	DURAMAX® PART NO.	HEIGHT (H)	BASE WIDTH (W)	BASE THICKNESS (BT)	OUTSIDE DIAM. (D)	WALL THICKNESS (WT)	WT./FT.	LENGTH UP TO
DB-502	802050201	2"	2 1/2"	17/32"	2 1/2"	5/8"	1.8 LBS.	60 FT.
DB-503	802050301	2 1/2"	2 1/2"	17/32"	3"	5/8"	2.5 LBS.	60 FT.
DB-504	802050401	3 1/2"	3 5/8"	25/32"	4 1/4"	3/4"	4.7 LBS.	60 FT.
DB-506	802050601	5"	5 7/16"	1"	6"	1"	9.0 LBS.	20 FT.
DB-508	802050801	6"	7 1/4"	1 3/16"	8"	1 1/2"	15.5 LBS.	20 FT.
DB-510	802051001	8"	9 1/4"	1 11/16"	10"	1 1/2"	24.8 LBS.	20 FT.
DB-512	802051201	8"	11"	2"	12"	2"	28.6 LBS.	20 FT.

