

# RK12963

## RK12963 Retrofit Kit Overview

The 90S1230C Integrated assemblies are two-stage filtration and repriming systems featuring a solid-state controlled electronic priming pump, electronic air purge, a cleanable pre-filter with a stainless steel element and a fuel filter/water separator. These complete fuel management systems isolate contaminants present in diesel fuel and trap them prior to reaching the fuel injection system, protecting the engine's fuel system from costly and premature failure.

Pictured below are some of the components included with this kit. Detailed teardown and rebuild instructions are also included.

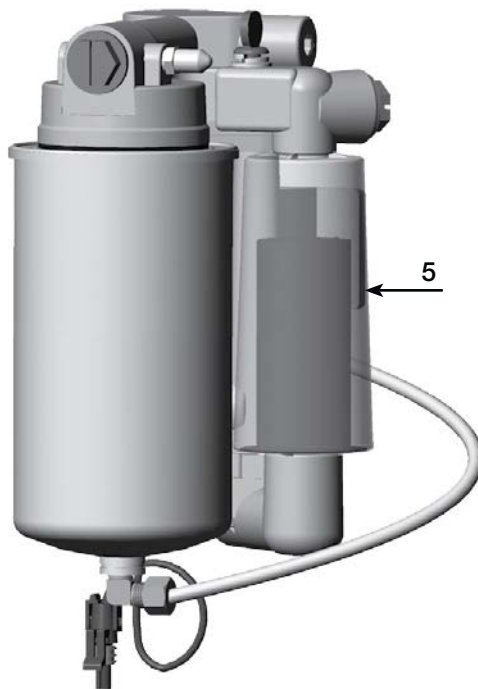


	<u>Part Number</u>	<u>Description</u>
1.	0102-6-2	Bushing
2.	30899	Water Sensor
3.	30745	Metal Bowl

(sold separately)

4.	S3230P	Replacement Element
5.	300200	Prescreen 200 micron (includes O-rings)

### Before

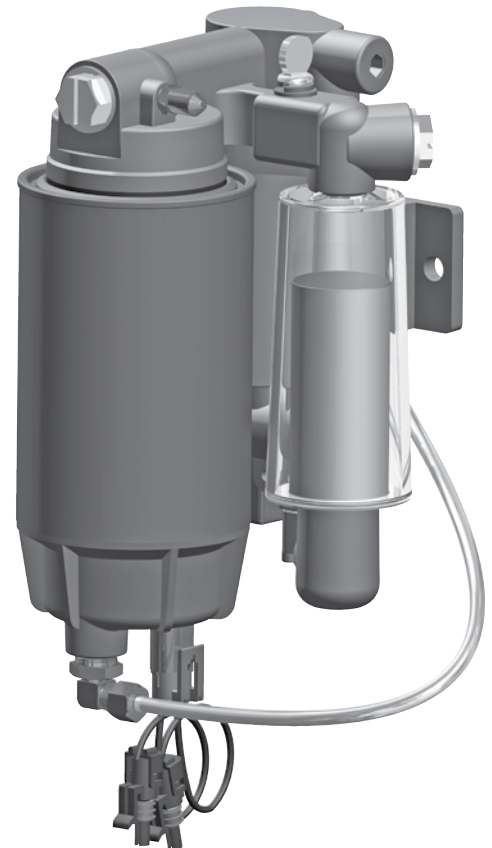


Integrated Assembly  
(not the RK12963)

### After



S3230P Filter sold separately.  
Only Item parts 1-3 are included in the RK12963.



Integrated Assembly  
(not the RK12963)